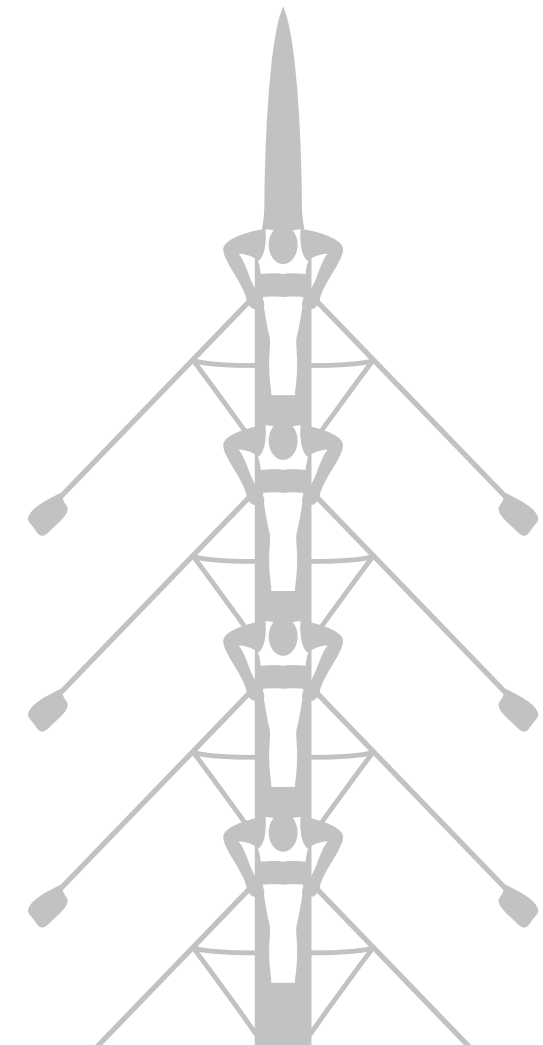


CASPAR LUDWIG  
**OPLÄNDER STIFTUNG**

*Shareholder of WILO SE and  
Trustee of the Wilo Foundation*

## All in the same boat

About the social engagement of the  
Caspar Ludwig Opländer Foundation  
and the Wilo Foundation





Contents

- 4 The foundation
- 6 The founding family
- 8 Why the foundation was established
- 10 Water, the environment and technology
- 12 Talent promotion
- 14 International understanding
- 16 Regional responsibility

## All in the same boat – business, family and society



*‘Rowing, a sport I have pursued with my grandfather and father ever since I was a child, has taught me the value of joining forces and community spirit.’*

*In a symbolic sense, this is also the approach of our foundation. These days, not only the different generations and company leaders but also business and society are together in the same boat and highly dependent on one another.’*

Dr.-Ing. h.c. Jochen Opländer

Board of Trustees of the Caspar Ludwig Opländer Foundation  
(from left to right):

Jan Opländer,  
Evi Carola Hoch,  
Prof. Dr.-Ing. Hans-Jörg Bullinger,  
Dr.-Ing. h.c. Jochen Opländer,  
Prof. Dr. Norbert Wieselhuber,  
Dr. Heinz-Gerd Stein (Chairman of the Board of Trustees)

**T**he Caspar Ludwig Opländer Foundation was set up by entrepreneur and philanthropist Dr.-Ing. h.c. Jochen Opländer, together with his children, Claudia Reisbeck, Jan Opländer and Felix Opländer, on 14 January 2011.

When the foundation was established, the majority of WILO SE shares previously owned by the family were transferred to the foundation. As the majority shareholder with a 90% interest, the foundation ensures the continuity of WILO SE – an international manufacturer of pumps and pumping systems with over 60 production and sales companies and around 7,000 employees worldwide.

WILO SE can be traced back across four generations of the family to Caspar Ludwig Opländer, the great-grandfather of philanthropist Dr.-Ing. h.c. Jochen Opländer, and the man the foundation is named after.

In accordance with the founder's intention, the foundation – as well as ensuring the continuity of WILO SE and its leadership – also has the purpose of providing financial support in the areas of science, education, culture and sports. The support provided by this family foundation primarily focuses on key issues of the future such as water, the environment and technology, talent promotion, international understanding and regional responsibility. In order to achieve its goals, the foundation primarily supports projects run by third parties

and only manages such projects itself in a few exceptional cases.

The decision-making bodies of the foundation are the Board of Trustees and the Executive Board. The Board of Trustees, made up of six people, decides which charitable and social support activities will receive funding from the foundation. In keeping with the founder's wishes, the Board of Trustees includes external experts and personalities as well as members of the founding family.

The Executive Board consists of the Chairman of the foundation, Prof. Dr.-Ing. Hans-Jörg Bullinger – the former President of Fraunhofer – and Ms. Evi Carola Hoch.

## Ingenuity, motivation and community spirit – the three principles of life for the Opländer family

The Opländer family of entrepreneurs and philanthropists in Dortmund can look back on more than 140 years of private enterprise – a long tradition that all started with Caspar Ludwig Opländer. WILO SE was recently transferred by its fourth generation leader, Dr.-Ing. h.c. Jochen Opländer and his children, Claudia Reisbeck, Jan Opländer and Felix Opländer, into a family foundation.



**Caspar Ludwig Opländer**  
(known as 'Louis')  
26 February 1845 to 10 October 1891

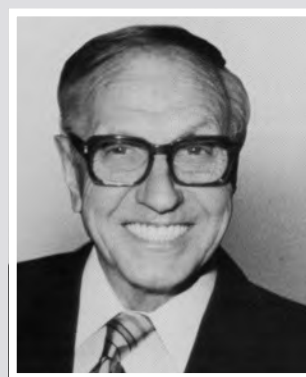
The man who gave the foundation its name was a coppersmith journeyman, who in 1872 founded his own copper and brass factory 'Kupfer- und Messing-warenfabrik Louis Opländer'. He and his wife Wilhelmine Gertrud Caroline had seven children, the eldest of whom was also called Louis. With the rise of industrialisation and the growing prosperity of the late 19th century, the demand for new distilleries and breweries increased, which had a positive effect on the business of Louis Opländer's copper and brass factory. Moreover, in the fast-growing towns of the Ruhr district, the number of homes with directly accessible, built-in water taps also grew, and with it the demand for domestic inlet and outlet pipes.



**Louis Opländer**  
7 March 1873 to 18 May 1962

The life's work of manufacturer Louis Opländer included many technical innovations, like the machine he developed shortly after the turn of the century to standardise barrel sizes. His ingenuity also helped improve the quality of life of the general population. His warm-water washing facilities, clothes hoists, ventilators and sprinkler systems for fighting fires are all worthy of special mention. His invention of steam heaters and hot-water heating systems was also a pioneering invention, which eventually helped the 'Louis Opländer' firm become one of the leading central heating companies.

In his spare time, after the opening of the Dortmund-Ems canal in 1898, Louis discovered his passion for rowing and became co-founder of the Hansa Rowing Club in Dortmund.



**Wilhelm Opländer**  
11 July 1901 to 6 February 1984

To this day, the name Wilhelm Opländer stands for technical innovations in heating and air-conditioning (the 'Louis Opländer' firm), and in the more recently developed pump business (the company name 'WILO' being a contraction of Wilhelm Opländer). The Dortmund mechanical engineer secured major contracts for the installation of heating and air conditioning systems in government departments, hospitals and schools. His pump business all started with the invention of circulating pumps and the world's first circulation accelerator in 1928. The 'WILO-Perfekta' pump was developed in 1953 and ever since then the potential uses for pumps have continued to expand.

Like his father Louis, and later his son Jochen, Wilhelm Opländer was also a keen rower and dedicated supporter of the Hansa Rowing Club in Dortmund.



**Dr.-Ing. h.c. Jochen Opländer**

Dortmund entrepreneur and benefactor, Dr.-Ing. h.c. Jochen Opländer founded the Caspar Ludwig Opländer Foundation in January 2011 together with his three children, Claudia Reisbeck, Jan Opländer (owner of the Louis Opländer heating company, Heizungs- und Klimatechnik GmbH) and Felix Opländer. The founding family, through its membership on various governance boards, guides the foundation and the development of WILO SE. The Opländer family maintains strong ties with the staff of WILO SE and the people of the Dortmund region, and has a real sense of commitment to the common good.

As Managing Director, CEO and later Chairman of the Supervisory Board, Dr.-Ing. h.c. Jochen Opländer has shaped the growth, international focus and technological achievements of the company that is now WILO SE for decades and also ensured its long-term effectiveness. Today he supports the company as Honorary Chairman of the Supervisory Board.

The outstanding accomplishments and community services of entrepreneur Dr.-Ing. h.c. Jochen Opländer have been acknowledged over the years by numerous awards and honours, like for example the City Ring Dortmund of the Initiativkreis attraktive Innenstadt e. V., the Diesel Medal of the German Institute of Inventions e. V., the Badge of Honour of the Technical University of Dortmund, the Hermann-Rietschel Medal of Honour of the VDI Society for Building Services Engineering, an Honorary Doctorate from the Technical University of Dresden and the Officer's Cross of the Order of Merit of the Federal Republic of Germany.

Dr.-Ing. h.c. Jochen Opländer is a member of the Board of Trustees of the Dortmund Culture Foundation. Like his grandfather Louis and father Wilhelm before him, he has continued the family tradition of supporting the sport of rowing. The Hansa Rowing Club made him an Honorary Member in recognition of his long-standing services to the club.



**Claudia Reisbeck**



**Jan Opländer**



**Felix Opländer**



## Questions for the founder, Dr.-Ing. h.c. Jochen Opländer

The Executive Board Members  
Prof. Dr. Hans-Jörg Bullinger  
and Evi Hoch in conversation ...



### What were your motives for establishing the Caspar Ludwig Opländer Foundation?

The future of WILO SE and its employees is very close to my heart, and my children and I bear a special responsibility to them. In establishing the foundation, our intention was to apply a forward-looking model that would secure the successful continuation and autonomy of WILO SE, which is now in its fourth generation – and thus an important part of our family, too. We took the view that a foundation would be a very good way of ensuring that continuity.

But to us it was also about concerted action between business and society.

### How is such concerted action between founding family, business and society manifested?

As the founding family, we have a strong sense of social responsibility. That is definitely a feature of our family foundation. The charter of the Caspar Ludwig Opländer Foundation expressly states that one of the purposes of the foundation is to support science, education, culture and sports.

But our desire to act as a socially responsible entrepreneurial family is something we first put into practice much earlier, in the year 2005. At that time I set up the Wilo Foundation with my two sons, Jan and Felix. Since 2013, its work has been managed and administered through the Caspar Ludwig Opländer Foundation.

### Which funding topics are particularly important to you?

Young people are our future. So in the first instance, our aim is to support the youth of today by helping them develop their personal talents and strengths. Many talented young individuals do not have the necessary support from home, because their parents cannot afford or manage it.

For many other children in the world, on the other hand, life is more a matter of survival, dependent on such elementary things as safe supply of drinking water, adequate hygiene and basic healthcare. We want to make a lasting difference in this area, too. The key to achieving these goals and ensuring responsible use of natural resources like water is further development through scientific research and shared expertise in pursuit of intelligent solutions. With this in mind, we are

trying to make a small difference to the lives of various people.

### Where, in a geographical sense, do you see a particular need for action?

The Opländer family has developed a special relationship over the years with developing countries, emerging economies, and in every area of the globe where WILO SE maintains an active business interest, because we have often travelled to these places as a family. Today we often visit growth countries like China, India and Korea, where there is an obvious need for action.

We also maintain a special relationship with our immediate neighbours here in Europe, like France and Poland..

... with founder  
Dr.-Ing. h.c. Jochen Opländer



### To end with a more personal question: what is your connection with the sport of rowing?

You mean our support for the German Rowing Eight. Well, my passion for rowing goes back to my childhood. You see, as a very young boy, I would sit in a rowboat with my grandfather and father, and I had to work really hard to keep up with them as we toured around. After the Dortmund-Ems canal was opened in 1898, my grandfather helped establish the Hansa Rowing Club in Dortmund, and my father took over from where he left off. I still row myself on a reasonably regular basis, and I must say that the strong determination, the required technical precision of rowing, and the absolute necessity of working as a team in the boat have always fascinated me. We also travelled to London during the 2012

Olympics, of course, to witness the German Rowing Eight live in action – they train in Dortmund, you see – so we were there to celebrate the gold medal with them. That was a wonderful experience!



## Key issues of the future: Water and the environment deserve our attention – worldwide.



**T**he pressing global issues of environmental protection – and responsible use of water as a natural resource in particular – deserve our special attention. Wherever we can, we work with experienced, professional partners to make a sustainable contribution to improving the situation for people in transition economies and developing countries. We are involved in both environmental and water projects as well as relevant application areas of science and education.

### Helping with water

In view of the fact that some 1.3 billion people have insufficient access to safe drinking water and 2.6 billion people worldwide have no adequate sanitation facilities, we support water projects in transition economies and developing countries. Because 90% of all non-industrial

waste in such countries is discharged untreated, upgrading existing facilities to meet modern standards of environmental protection and sparing use of resources also plays a growing role in fostering sustainability.

### Knowing what's going on

This is the motto for our science and education projects in the areas of water, the environment and technology. The focus here is on applied science and practical training as well as strategic exchange of scientific experience. For this reason, we support study programmes, science projects, conferences, water supply and sanitation, environmental sciences, spatial planning and networking platforms for science journalism.

### Examples of support

#### » Water projects in developing countries

In an SOS Children's Village in Mombasa (Kenya), the entire water supply, including new piping systems within the village and the school, was replaced and upgraded. In the SOS Children's Village in Imzouren (Morocco), an earthquake-damaged well was rebuilt and every house in the village connected to suitable sanitation systems.

As part of the 'Wasser wirkt' ('water works') campaign (2012-14) we are supporting UNICEF Deutschland in its donation activities. The goal is to give at least 500,000 children in six countries (Bangladesh, Cambodia, Ethiopia, Somalia, South Sudan and Zambia) sustainable access to clean drinking water, latrines and information about hygiene by 2015.

#### » Science journalism

Based on the 'medien-doktor UMWELT', a watchdog project run by the Science Journalism Faculty of the Dortmund Technical University, some meaningful criteria and quality monitoring standards for environmental reporting were developed.

#### » Spatial planning in developing and emerging countries

With the help of a scholarship for 'Spatial Planning for Regions in Growing Economies' (SPRING), students of Dortmund Technical University can acquire practical knowledge about environmental planning, physical infrastructure planning and socioeconomic development planning.

Further information about the projects we support is available on the internet at:  
[www.oplaender-stiftung.de](http://www.oplaender-stiftung.de)



## Promoting talent – arousing curiosity

**E**mpowering young people – this is our motto for promoting young talents in the fields of science, education, culture and sports. The aim is to empower young people to further develop their existing abilities and personal gifts or discover their hidden talents.

With our many ‘Deutschlandstipendien’ (Germany scholarships) in the areas of technology and the environment we provide financial support to committed and talented students to help them uncover their true potential right from the start of their university studies. In order to deepen their understanding in arts and culture, regular cultural events are held exclusively for them. In this way, the young students also benefit from our donations to institutions of arts and culture.

We grant special awards to particularly talented young scientists and musicians. Amongst other things, the young musicians are given the opportunity to perform at concerts in the Dortmund Concert Hall or foreign venues.

Our sports funding programme is primarily dedicated to rowing. It focuses on better training conditions, team building measures and junior development programmes for young rowers.

To us, ‘arousing curiosity’ means opening children’s eyes to the exciting world of science (water, the environment and technology), and opening their ears to the joys of music and singing.

### Examples of support

#### » Deutschlandstipendien (Germany scholarships at universities)

We provide over 80 Germany scholarships at Dortmund Technical University, the Otto-von-Guericke University in Magdeburg and Hof University of Applied Science, primarily for students embarking on technical, scientific and international studies.

#### » Classical music awards

Our incentive award for scholarship holders of the Dortmund Mozart Society provide gifted students with financial support and also give them an opportunity to perform at a concert in the renowned Dortmund Concert Hall.

#### » Deutsches Schülerstipendium (German pupil scholarship)

The Wilo Foundation, in conjunction with the German pupil scholarship programme supports talented school children from disadvantaged backgrounds in the Saxony-Anhalt region.

#### » Children’s University

We support the Children’s University (KinderUni) at Dortmund Technical University and contribute to the university’s popular series of events ‘Technology is Fun’ with lectures, practical demonstrations and experiments.

Further information about the projects we support is available on the internet at:  
[www.oplaender-stiftung.de](http://www.oplaender-stiftung.de)



From top to bottom:  
Incentive award for scholarship holders of the Mozart Society,  
‘Technology is Fun’ at the Children’s University of the TU Dortmund  
Supporting the Hof Symphony Orchestra, Culture & Education  
programme

Promoting the sport of rowing: Germany’s Rowing Eight





## Across national boundaries: Enabling encounters – enhancing intercultural understanding



From left to right:  
1: Exhibition 'China-Germany:  
Abstract Painting today!'  
2 and 4: Cultural management conference  
3: Embassy concert in Warsaw, Valentin Radutiu

International understanding is not just a topical issue for government and industry. It is relevant to anyone who takes on social responsibility, whether that be in science, education or arts and culture.

Continual scientific and cultural exchange is vital to the development of the European community and a common set of values. Supporting seminar events, concerts and exhibitions is an ideal way for us to strengthen that essential intercultural dialogue.

Added to this are some new challenges presented by the developing and transition countries of Africa, Asia and Latin America, which are currently undergoing the process of reform and opening up more and more to the rest of the world. With the aim of fostering this increased potential for exchange of ideas and better intercultural understanding, we support scholarships

with a foreign component and scientific, educational and cultural institutes with international conferences and exhibition projects.

### Examples of support

#### » Cultural management conference

With the aim of promoting forums for the exchange of ideas between the various countries, we supported the conference 'The Art of Managing Culture' held in November 2012 in Berlin. The conference offered young culture managers and experts in cultural research, teaching and management from more than 40 countries – from Afghanistan, Brazil and Japan to Tanzania – the opportunity to compare notes and make new contacts for future cultural projects. The conference was initiated and organised by the Goethe-Institut with support from the Caspar Ludwig

Opländer Foundation, Mercator Foundation, Allianz Cultural Foundation, Robert Bosch Foundation, European Cultural Foundation and media partner/publishing house Der Tagesspiegel.

#### » Art exhibition 'China-Germany: Abstract Painting today!'

As part of the Chinese Cultural Year in Germany 2012, and in collaboration with the Frank Schlag Gallery, we exhibited 40 works of abstract painting by eight Chinese and eight German artists on the premises of WILO SE in Dortmund, and later in Beijing. The exhibition shed light on parallels and differences between the perspectives and traditions of artists from China and Germany in relation to abstract painting.

#### » Embassy concerts

Since 2012 we have been supporting concerts staged in German embassies abroad that feature award win-

ners selected by the Cultural Committee of German Industry (Kulturkreis der deutschen Wirtschaft im BDI e.V.) in Berlin. In addition to the actual music award, the embassy concerts give these exceptional young musicians an opportunity to expand their audience on international soil.

Further information about the projects we support is available on the internet at:  
**[www.oplaender-stiftung.de](http://www.oplaender-stiftung.de)**





## Taking responsibility for the region

Like the Opländer entrepreneurial and founding family, the foundation also has close ties with the City of Dortmund and the surrounding region as well as all the locations of WILO SE subsidiaries. Maintaining a strong degree of community involvement comes naturally to the foundation, and is a practical way of carrying on the tradition of the founding family.

To improve the cultural appeal of Dortmund within the region and beyond, the foundation supports the renowned Concert Hall in Dortmund and, in this way, helps to ensure that some outstanding musical events of the highest international standard are staged there.

In terms of forward-looking structural assistance, the foundation supports the 'Science Master Plan' and thus the future development of Dortmund as a 'Science City'. As part of this initiative, partners from science, the business community, chambers of commerce and the city government are helping to develop future visions and an action plan for the Science City of Dortmund, which



includes everything from public relations campaigns to the work of the Children's University.

The involvement of the foundation in providing educational, sports and cultural support not only works to the benefit of talented individuals. It also includes liaison and facilitation services for students, apprentices, children and civil society as a whole.

### Examples of support

#### » Dortmund Concert Hall: opera in concert

A key element of our cultural support is financial assistance for the 'opera in concert' series in the Dortmund Concert Hall, which was accepted into the European Concert Hall Organisation (ECHO) after just ten years of existence. As a way of ensuring opera is more accessible to a wider audience, support programmes for students and apprentices are offered as part of this series.

#### » Science City Dortmund

In the summer of 2011, the Dortmund City Council decided to draw up a master plan on the subject of science. The foundation is providing structural and forward-looking assistance to the Science Master Plan and, in this way, supports the future development of Dortmund into a Science City. The purpose of the Science Master Plan is to make Dortmund better known as a science location, promote closer networking of local scientific institutions and expand the degree of collaboration that already exists between the science community and the city in general.

Further information about the projects we support is available on the internet at:  
[www.oplaender-stiftung.de](http://www.oplaender-stiftung.de)



*The commitment and professionalism  
of our partners enable us to make a  
contribution to society.  
Many thanks to you all!*

## Imprint

Publisher:

Caspar Ludwig Opländer Stiftung  
(Caspar Ludwig Opländer Foundation)

*Shareholder of WILO SE  
Trustee of the Wilo Foundation*

Executive Board of the foundation:  
Prof. Dr.-Ing. Hans-Jörg Bullinger (Chairman)  
Evi Carola Hoch

Nortkirchenstraße 100  
D-44263 Dortmund  
Germany

Tel +49 231 4102-7800  
Fax +49 231 4102-7810

info@oplaender-stiftung.de  
www.oplaender-stiftung.de

Concept and editing:  
Evi Carola Hoch

Design:  
Nieschlag + Wentrup, Münster

Translation:  
krämer dolmetschservice, Berlin

Copyright: Caspar Ludwig Opländer Stiftung  
All rights reserved.

2013  
Printed in Germany